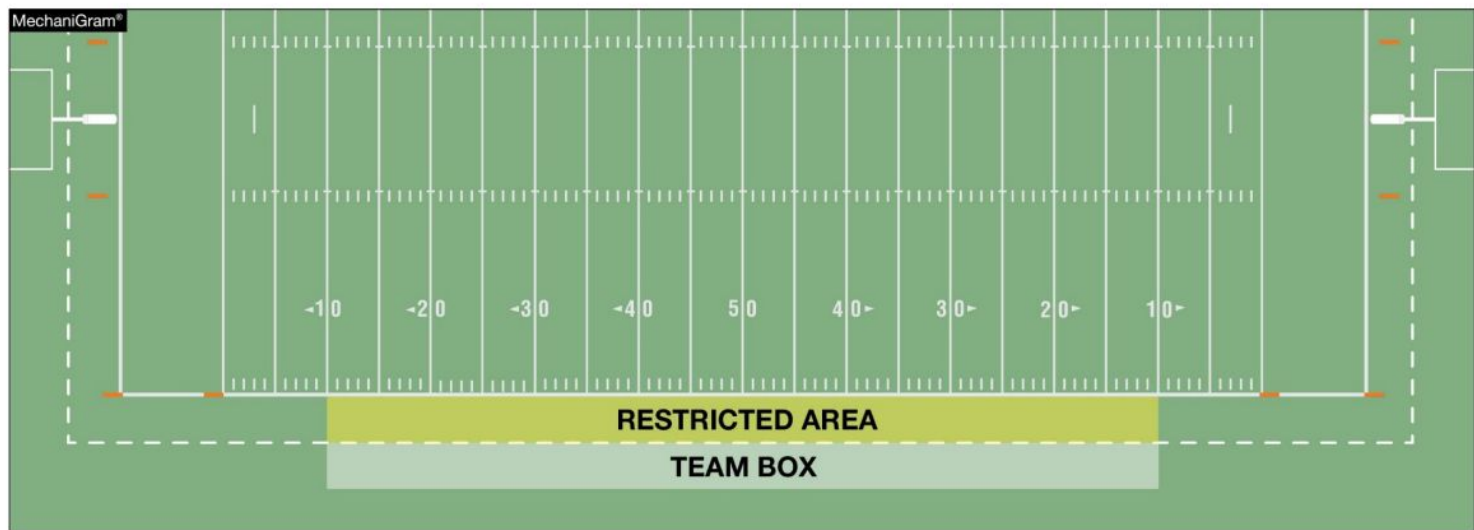




2022 NFHS
FOOTBALL
RULE
CHANGES

TEAM BOXES

RULE 1-2-3g NOTES 3. (NEW), TABLE 1-7 (3.) (NEW)



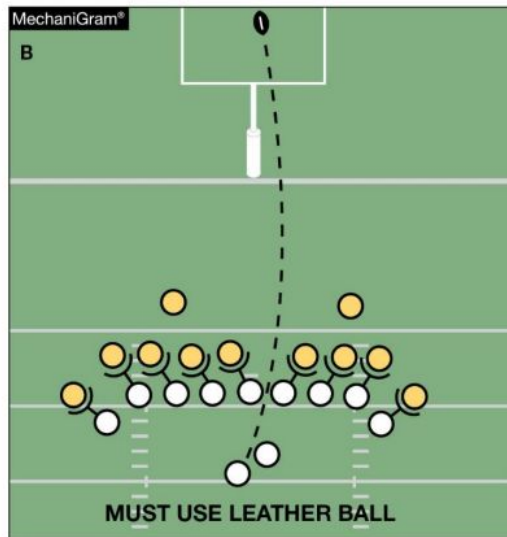
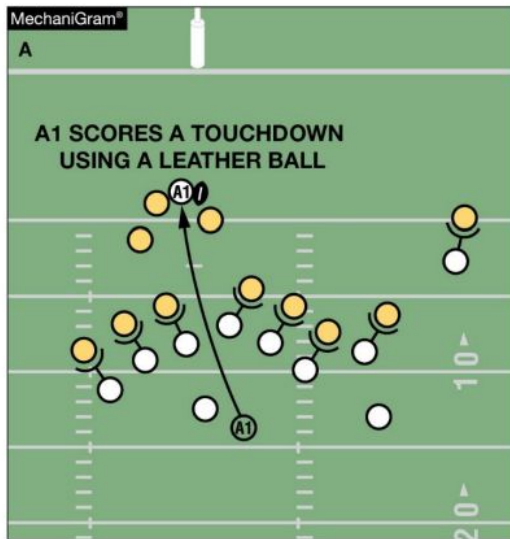
It is permissible for state associations to approve an extension of the team box and to determine the individuals who may be in the extended area, provided such extension is the same for both teams.

The Old Rule

1-3-3: The referee shall decide whether the ball meets specifications. If the field is wet, the referee may order the ball changed between downs.

GAME BALLS

RULE 1-3-3

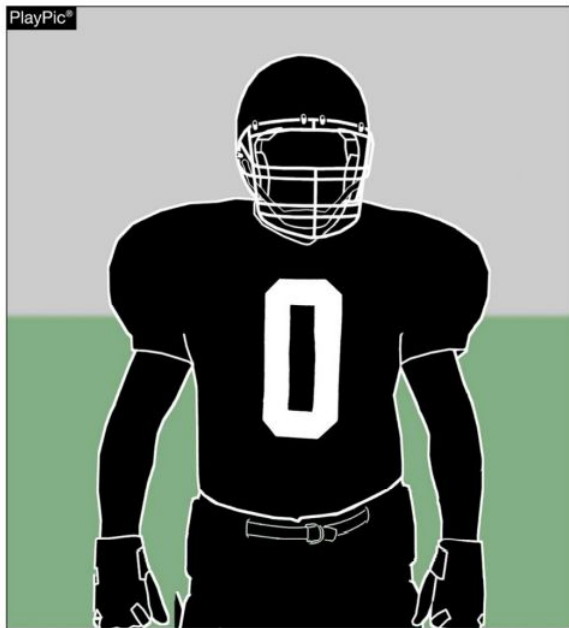


Any game official may order the ball changed between downs. Unless the ball is ordered changed by the Referee or another game official, Team A scoring a touchdown with one ball (MechaniGram A) may not request a different ball for the try (MechaniGram B) but may use a different approved ball for the ensuing free kick (PlayPic C).

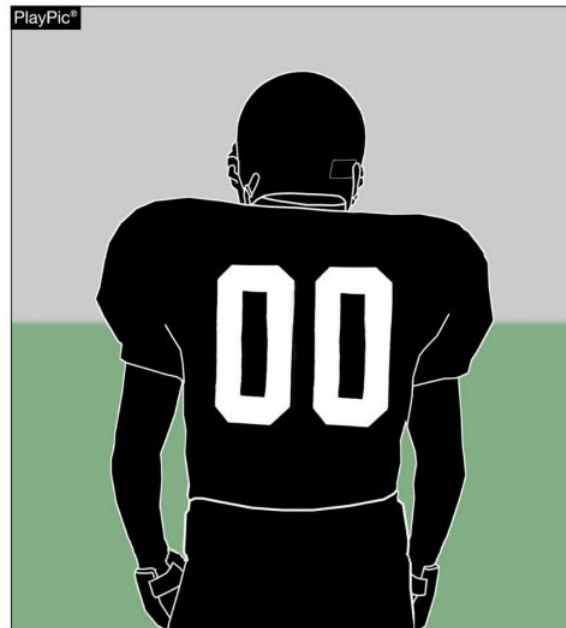


JERSEY NUMBERS

**RULE 1-4-3, FIGURE 1-4-2, RULE 1-5-1c(1),
RULE 7-2-5b EXCEPTIONS, RULE 7-5-6a**



Legal



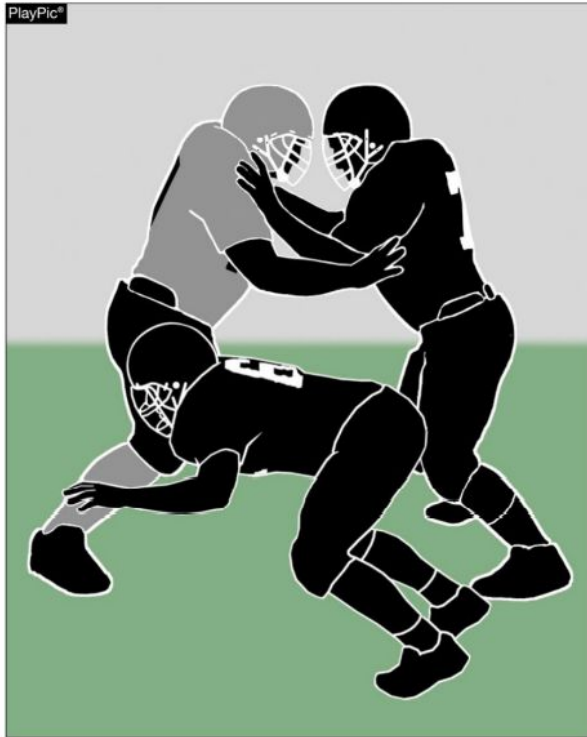
Illegal

Each player shall be numbered 0 though 99 inclusive. Any number preceded by the digit zero such as "00" is illegal.

THE OLD RULE

2-3-8: Chop block is a combination block by two or more teammates against an opponent other than the runner, with or without delay, where one of the blocks is low (at the knee or below) and one of the blocks is high (above the knee).

CHOP BLOCK RULE 2-3-8



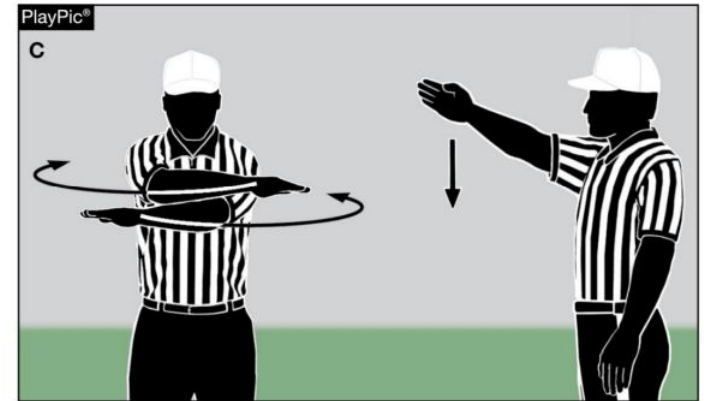
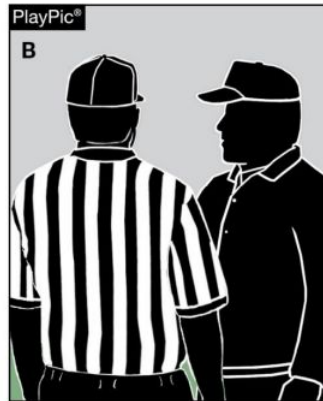
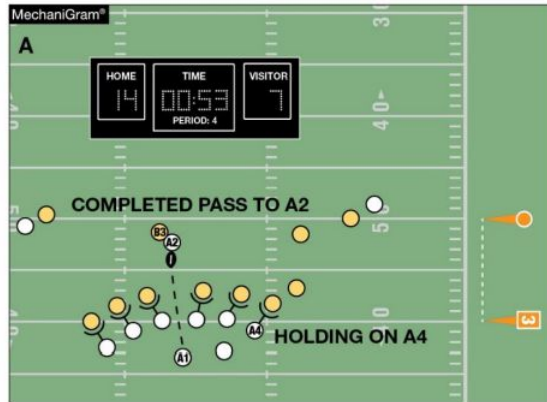
A chop block is combination block by two or more teammates against an opponent other than the runner, with or without delay, where one of the blocks is below the waist and one of the blocks is above the waist.



The Old Rule

3-4-7: When a penalty is accepted with less than two minutes remaining in either half , the offended team will have the option to start the game clock on the snap.

GAME CLOCK OPTION RULE 3-4-7



When a foul is committed with less than two minutes remaining in either half, the offended team has the option to start the game clock on the snap. In MechaniGram A, Team B trails when Team A fouls. Team B's coach is consulted (PlayPic B), choosing to decline the penalty and have the clock started on the snap (PlayPic C).

3-6-1a Play Clock

1. 25 seconds will be on the play clock and start on the ready for play signal:
 - a. Prior to a try following a score.
 - b. To start a period or overtime series
 - c. Following administration of an inadvertent whistle
 - d. Following a charged time-out
 - e. Following an official's time-out as in 3-5-7 or 3-5-10

3-5-7 An official's time-out occurs during a dead ball

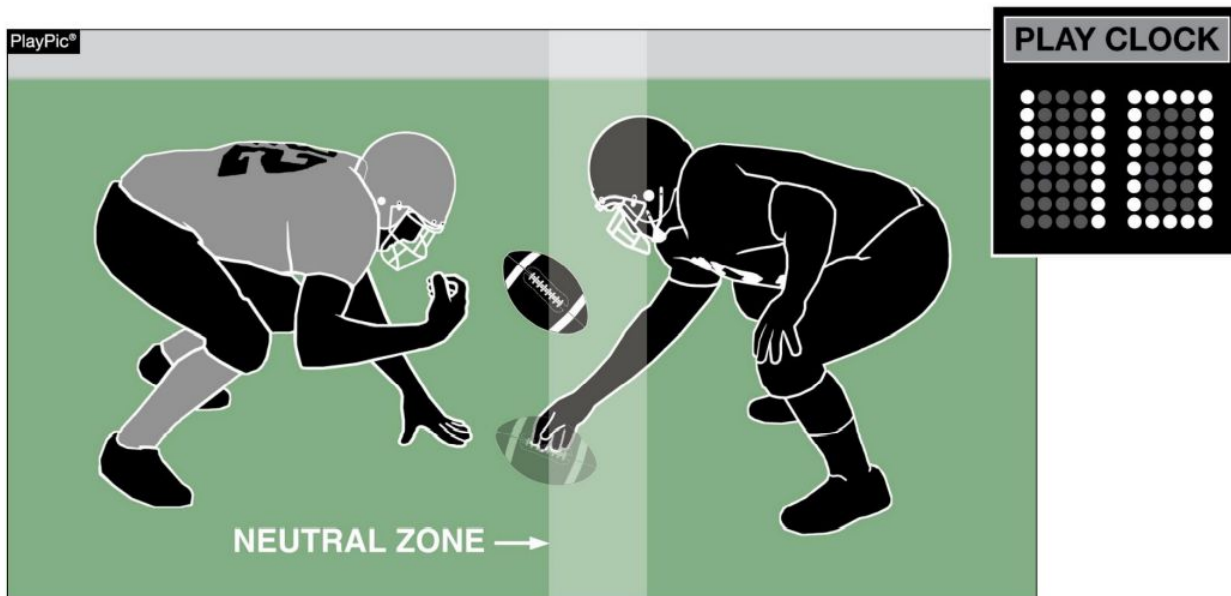
- a. For measurement of a possible first down
- b. When a first down is declared. **(exception to the 25 second play clock)**
- c. Following a change of team possession.
- d. When captain and coaches are notified of time remaining
- e. For a player in need of equipment repair.
- f. To dry or change the ball
- g. When a coach-referee conference concerning the misapplication of a rule results in the referee altering his ruling
- h. For unusual heat or humidity which may create a health risk to the players.
- i. After a foul, to administer the penalty
- j. For any unusual delay in getting the ball ready for play.
- k. For a TV/radio time-out
- l. For Intermission between periods and after a score

3-5-10 An official's time-out (which is not charged to either team) occurs.....

- a. An apparent injured player is discovered by a game official while the ball is dead.....
- b. Any player who exhibits signs, symptoms or behaviors consistent with a concussion.....
- c. A game official discovers any player who is bleeding , has an open wound.....
- d. The helmet comes completely off during a down or subsequent dead-ball action....
- e. Any required player equipment is missing or improperly worn.



PLAY CLOCK RULE 3-6-1a(1)e EXCEPTION 2. (NEW)



When the clock is stopped due to Rule 3-5-7i and Team B is the only team to foul, the play clock will be set to 40 seconds.



3-5-7 An official's time-out occurs during a dead ball

- a. For measurement of a possible first down
- b. When a first down is declared. **(exception to the 25 second play clock)**
- c. Following a change of team possession.
- d. When captain and coaches are notified of time remaining
- e. For a player in need of equipment repair. **(exception to the 25 second play clock if a defensive player)**
- f. To dry or change the ball
- g. When a coach-referee conference concerning the misapplication of a rule results in the referee altering his ruling
- h. For unusual heat or humidity which may create a health risk to the players.
- i. After a foul, to administer the penalty **(exception to the 25 second play clock if a defensive foul)**
- j. For any unusual delay in getting the ball ready for play.
- k. For a TV/radio time-out
- l. For Intermission between periods and after a score

3-5-10 An official's time-out (which is not charged to either team) occurs.....

(exception to the 25 second play clock if a defensive player)

- a. An apparent injured player is discovered by a game official while the ball is dead.....
- b. Any player who exhibits signs, symptoms or behaviors consistent with a concussion.....
- c. A game official discovers any player who is bleeding , has an open wound.....
- d. The helmet comes completely off during a down or subsequent dead-ball action....
- e. Any required player equipment is missing or improperly worn.

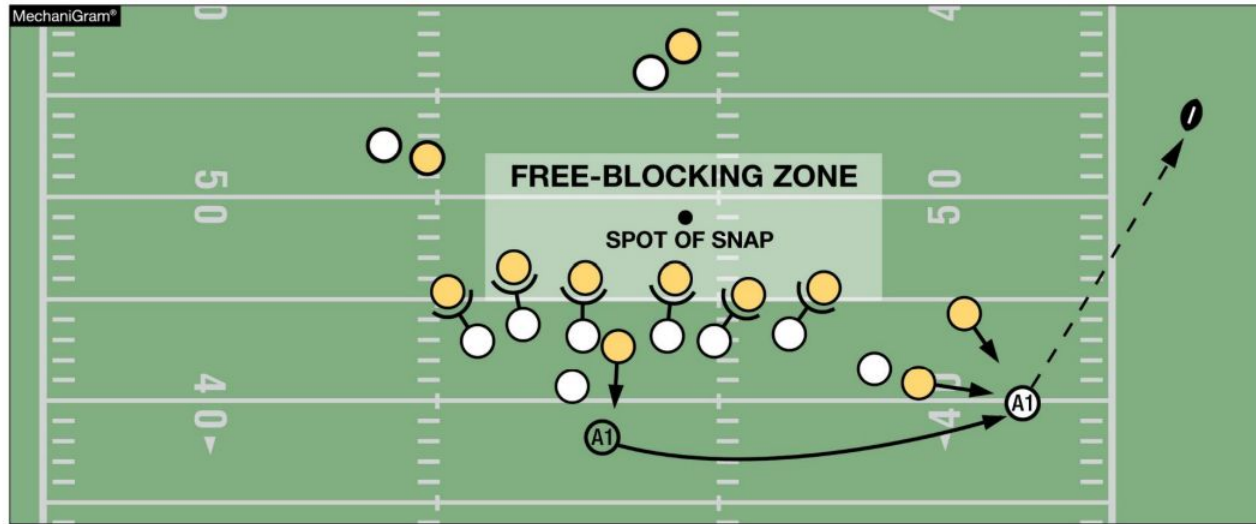
Point of emphasis

2-15: Forward progress is the end of advancement of the ball, toward the opponent's goal, in a runner's possession or the forward most point of the ball when it is fumbled out of bounds, and it determines the dead ball spot.

4-2-2: The ball becomes dead and the down is ended when a runner goes out of bounds, is held so *his (voluntary)* forward progress is stopped or allows any part of his person other than hand or foot to touch the ground.

INTENTIONAL GROUNDING

RULE 7-5-2d EXCEPTION 2. (NEW), TABLE 7-5-2, TABLE 7-5



It is legal for a player to conserve yardage by intentionally throwing an incomplete forward pass if the passer has been beyond the lateral boundary of the free-blocking zone as established at the snap; and the pass reaches the neutral zone, including the extension beyond the sideline.

ALOHA VIDEO OF NEW GROUNDING RULE

(1) 2022 NFHS Grounding Rule Change -
Bing video